

# Composite Building Cladding



- ❖ Wood Plastic Composite (WPC)
- ❖ Minimal Maintenance
- ❖ Easy to Install
- ❖ Eco-friendly
- ❖ Green Deal Potential



For commercial and residential cladding projects

**Dura Cladding**

**ACCURUE CONSTRUCTION MATERIALS INC**

...designed for the future

Industrial Marine Landscaping Architectural



# Composite Cladding

Dura Cladding is produced from Wood Plastic Composite (WPC) which is manufactured by an extrusion process using a mix of recycled plastics and hardwood with various bespoke additives. WPC is an immensely versatile material which combines the traditional appearance of timber

with the durability and resilience of an engineered composite.

Dura Cladding is an ever increasingly popular choice for finishing the outside of commercial and domestic buildings. Otherwise known as weather-boarding or siding,

coloured or timber effect cladding is an attractive and economical way to finish the exterior of both new and refurbished buildings.

Dura Cladding provides a hardwearing, protective layer against the elements and is an excellent insulator.

**Project:** Severn Trent Offices, Shelton, Shrewsbury  
**Client:** Severn Trent, UK  
**Architect:** Glenn Howells  
**Main Contractor:** BAM Construction  
**Sub Contractor:** Solaglas  
**Product:** Dura Cladding Type 150/21 Flush Charcoal

For the new Severn Trent offices in Shrewsbury, Glenn Howells specified Dura Composites charcoal Dura Cladding because of its sustainability credentials. Dura Cladding is made from 87% recycled materials, comes with a warranty of up to 25 years and requires minimal maintenance which makes the life cycle costs much lower than natural wood. Dura Cladding is also colour stable, giving the customer complete peace of mind that the cladding will retain its colour throughout its design life expectancy.

**Eco-**  
Ideal for



# friendly Cladding

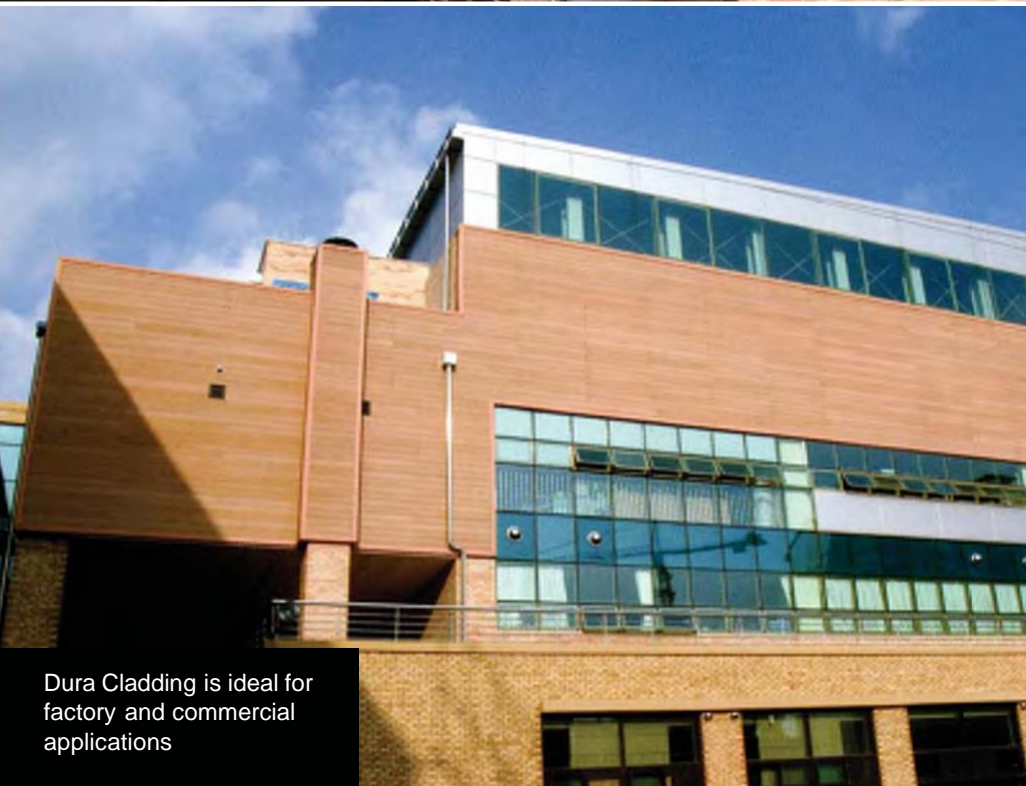
new and refurbishment projects



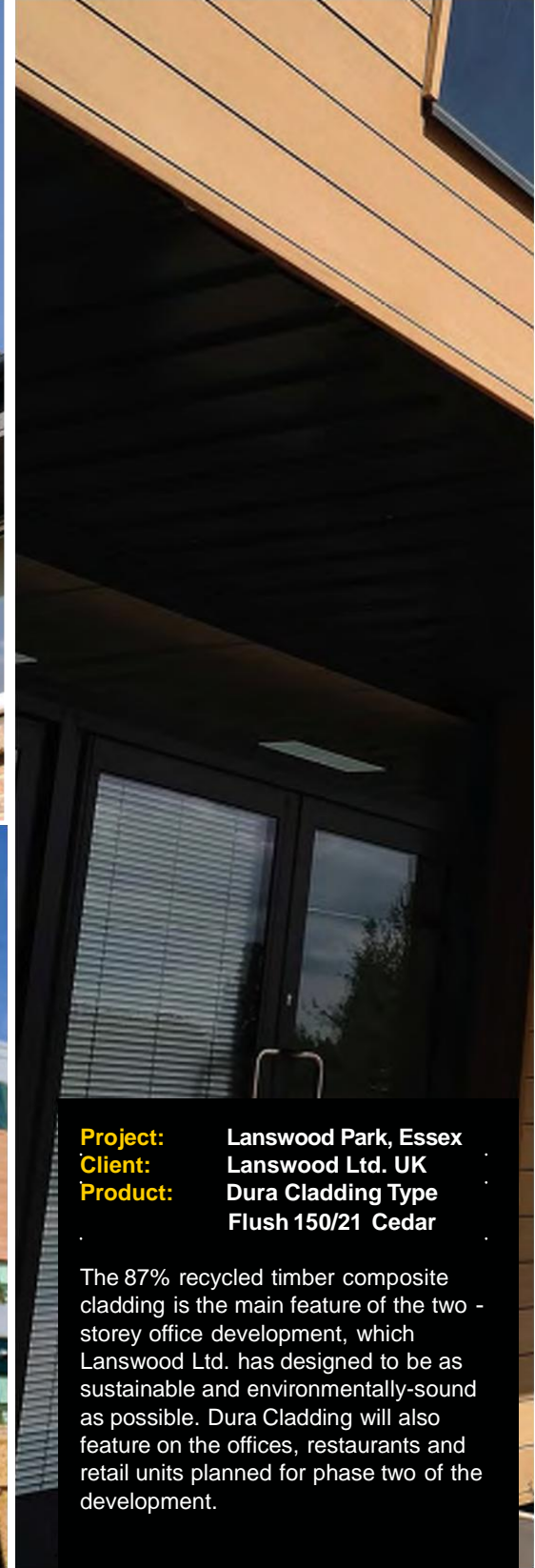
UK Prime Minister David Cameron discussing eco-friendly cladding products with Dura Staff at UK Trade Show...



**Project:** Gerlach House, Kent  
**Client:** Ashford Council UK  
**Product:** Dura Cladding Type  
Flush 150/21 Charcoal



Dura Cladding is ideal for factory and commercial applications



**Project:** Lanswood Park, Essex  
**Client:** Lanswood Ltd. UK  
**Product:** Dura Cladding Type  
Flush 150/21 Cedar

The 87% recycled timber composite cladding is the main feature of the two-storey office development, which Lanswood Ltd. has designed to be as sustainable and environmentally-sound as possible. Dura Cladding will also feature on the offices, restaurants and retail units planned for phase two of the development.

# Composite Cladding

## Dura Cladding

Dura Cladding looks and feels like natural wood and its unique formula provides lightweight yet durable cladding that will not splinter, warp or rot throughout its 50 years design life expectancy.



## Benefits



Dura Cladding is made from 87% recycled materials and is also available as 100% FSC certified



Watch our You Tube video to see how quick and easy Dura Cladding is to install



Dura Cladding is UV Weather Tested to ISO 4892-2 Xenon Arc (5000hrs) to ensure it will not splinter, warp or rot and doesn't require any staining or painting



Dura Cladding has a long life expectancy and requires minimal maintenance resulting in a lower life cycle cost when compared with traditional hard and softwood.

# Composite Cladding

Transforms the exterior of any commercial or residential building

*"Many people think that a timber composite product can't be as 'green' as a natural wood product, but the truth is that our full range of timber composite products, including Dura Cladding, meets the highest sustainability specifications and actually outperforms timber in service. It has a carbon footprint lower than wood and a significantly lower overall lifetime cost."*

Stuart Burns, Director

The image shows a close-up, low-angle view of the exterior wall of the Edgebaston Tennis Club. The wall is clad in light grey, horizontally-oriented panels. Large, three-dimensional, silver-colored letters are mounted on the wall, spelling out 'EDGEBASTON TENNIS CLUB' in two lines. The top line reads 'EDGEBASTON' and the bottom line reads 'TENNIS CLUB'. The letters are highly reflective and cast shadows on the wall below them. The perspective is looking up and slightly to the right, creating a sense of height and scale.

# EDGEBASTON TENNIS CLUB

**Project:** Edgebaston Tennis Club  
**Contractor:** Morgan Sindall  
**Sub Contractor:** Hathaway Roofing Ltd.  
**Architect:** Glenn Howells  
**Product:** Dura Cladding Type 150/21 Flush Light Grey

For the new tennis club at Edgebaston, Hathaway Roofing Ltd. wanted a bespoke light grey cladding and so Dura Cladding was the obvious choice. Despite the natural variations used in Dura Cladding, Dura Composites was able to work with the client to achieve a result that matched its specification. Thanks to the UV stability of Dura Cladding, the client has complete peace of mind that the cladding will retain its colour throughout its fifty year life expectancy.

# Louvre Cladding

An attractive & economical way to finish your building

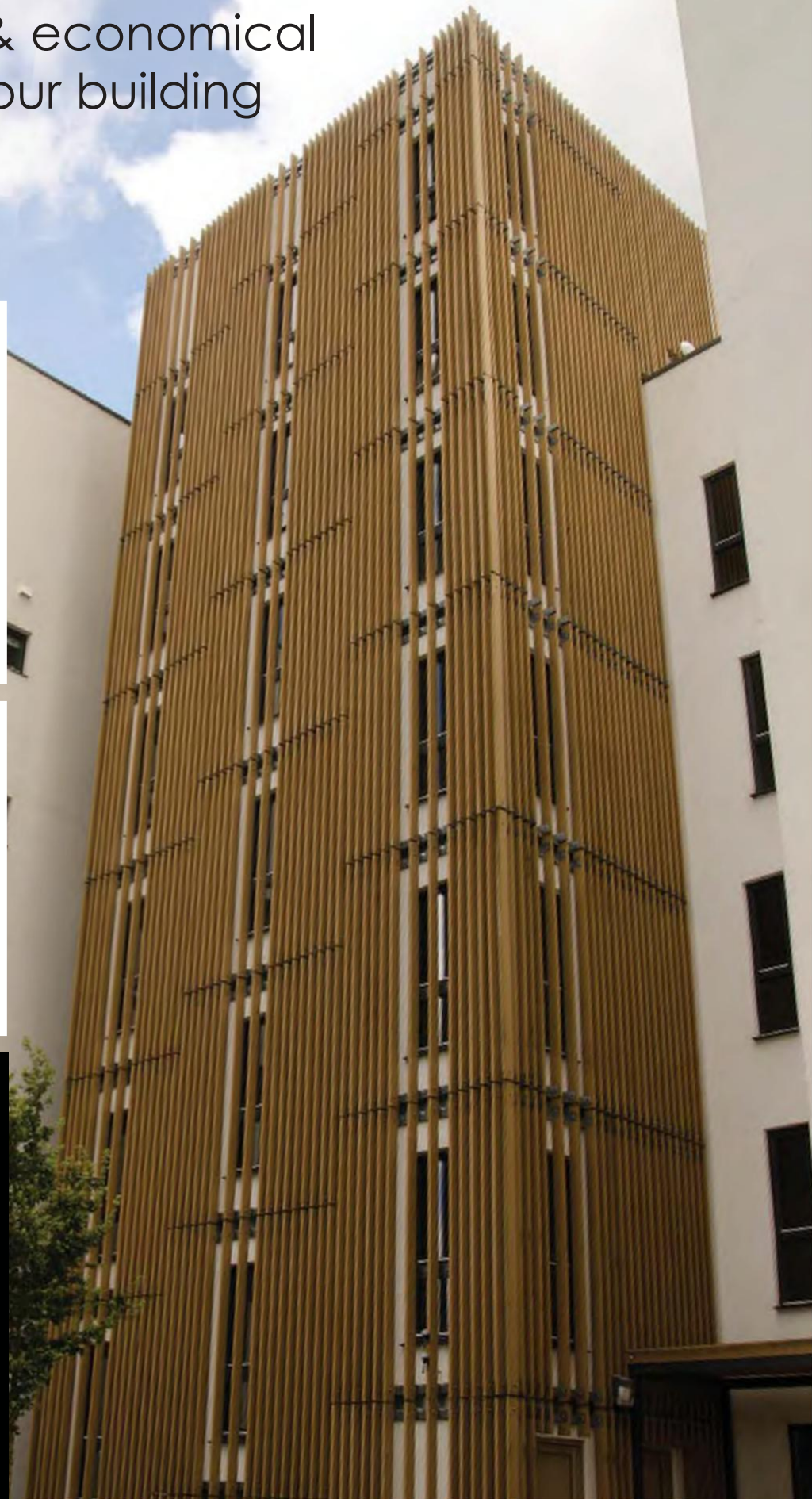


## Cladding benefits

- ▶ High performance composite construction
- ▶ High strength to weight ratio
- ▶ Permanent colour
- ▶ 316 stainless steel fixings available
- ▶ Low maintenance
- ▶ Easy to erect / install
- ▶ Corrosion and weather resistant
- ▶ Fire resistant grades available
- ▶ Simple cutting and installation on site
- ▶ Excellent value 'life cycle cost'
- ▶ UV Stable

**Project:** Social Housing, Lead Bitter Old Town Dock, Newport, UK  
**Architect:** Powell Dobsons Architects  
**Product:** Louvre Cladding Cedar

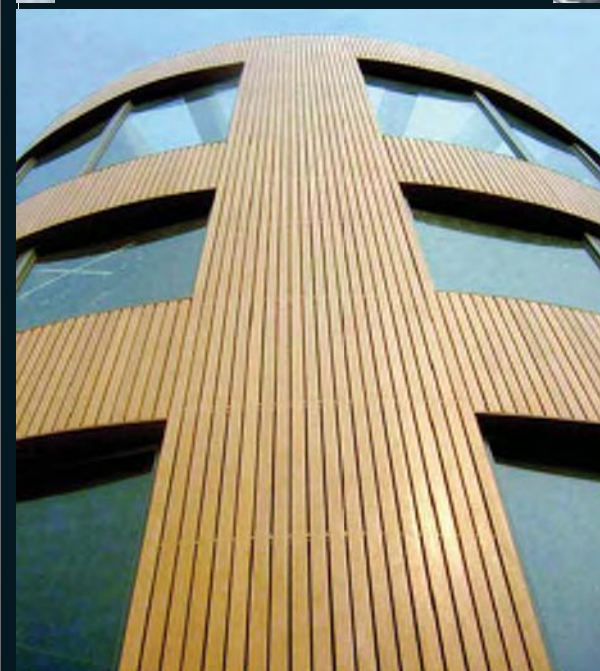
Louvre Cladding was specified by architects as a cost-efficient way of creating several feature walls on new social housing at Lead Bitter Old Town Dock. Louvre Cladding will transform the outside of any building and can be quickly and easily installed. It is also a great way to create a screen to hide any services on the exterior of the building.







Louvre Cladding is used globally and its UV stability means that it will survive even the harshest climates.



Dura Cladding Weatherboard is suitable for the refurbishment of all traditional buildings



### Long-life weathering properties

Dura Cladding benefits from a natural appearance. It also has the benefits of long life, light weight, low maintenance, non rotting, corrosion and electrical resistance, low installation costs, long service life and is UV Stable.

Dura Cladding products compete very favourably on a life cycle cost basis versus traditional materials due to their limited maintenance needs and long lifespan.

Dura Cladding is designed and has been tested to withstand extreme weather conditions and temperature ranges.

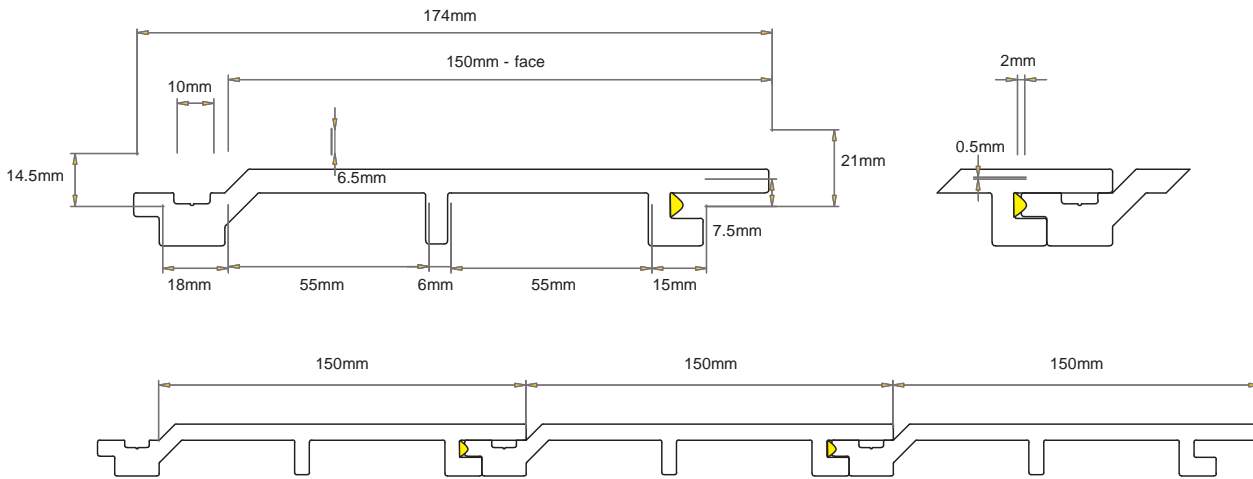
Various standard cladding profiles are available, and custom profiles incorporating alternative fixing systems can be produced to specification.



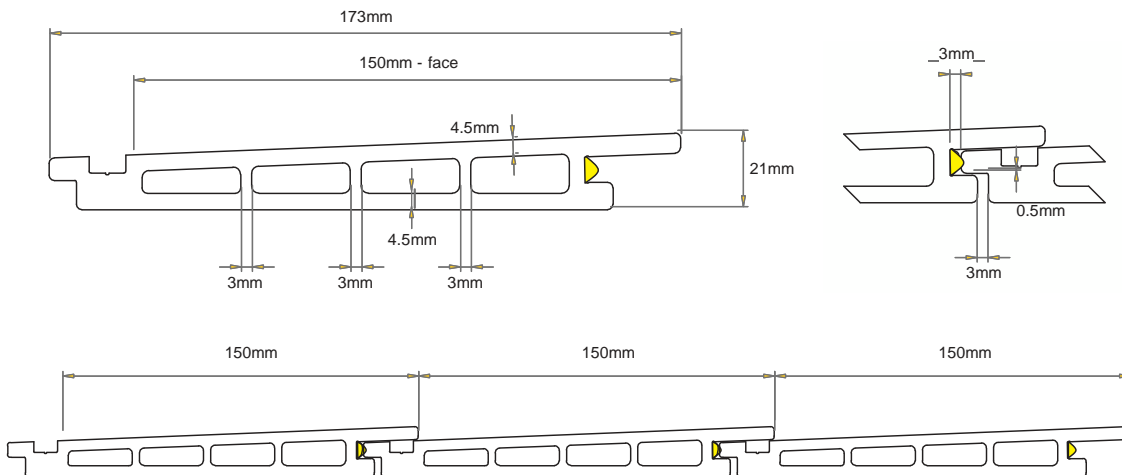
# Cladding Specifications

Wood Plastic Composite (WPC) Cladding for new or refurbishment projects

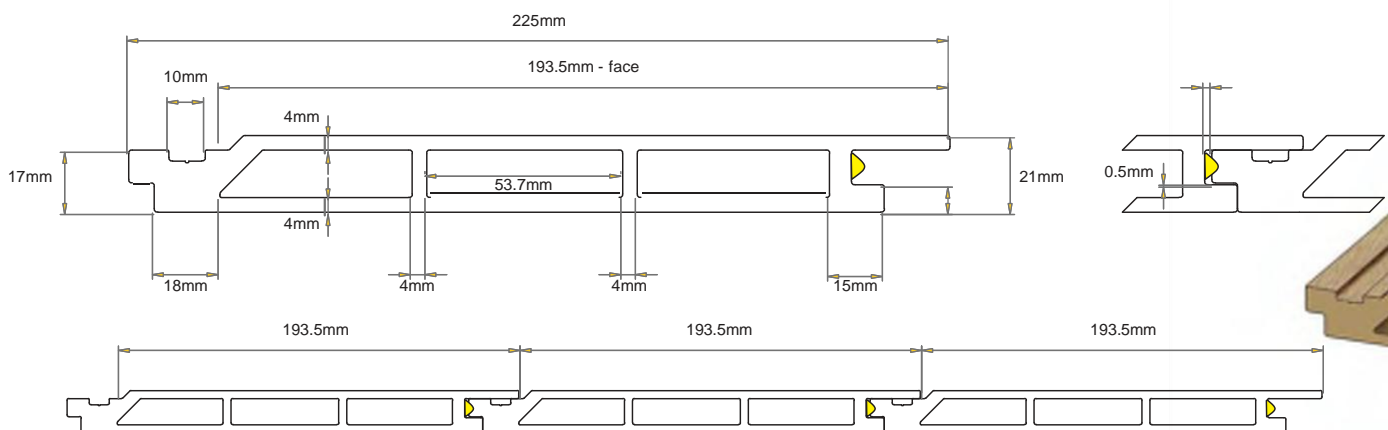
## Type 150/21 Flush (Tongue & Groove)



## Type 150/21 Weatherboard (Tongue & Groove)



## Type 194/21 Flush (Tongue & Groove) \* Available to special order



Louvre Cladding can be supplied in standard rectangular profiles to suit various cladding projects. Specific profiles can be produced to order.

## Cladding Dimensions & Weights

Cladding Profile	Plank Thickness	Plank Length	Actual Plank Width	Maximum Fixing Span	Weight l/m
Type 150/21 Flush	21mm	4800mm	174mm	600mm	22kg
Type 150/21 Weatherboard	21mm	4800mm	173mm	600mm	TBA
Type 194/21 Flush	21mm	4800mm	225mm	600mm	TBA
Starter Trim	23mm	4800mm	60mm	600mm	4.8kg
Top Window Trim	38mm	4800mm	154mm	600mm	8.1kg
External/Internal/Expansion Trim	38mm	4800mm	139mm	600mm	13.2kg
Trim Insert	14mm	4800mm	28mm	600mm	0.24kg

## Cladding Material Specifications

Characteristics	Unit	Test Reference
Tensile Strength	4.42mpa	BS 6399
Impact Strength	3.8kj	BS 6400
Flexural Strength	3.62gpa	ASTM D1037 - 93
Flexural Strength ****	TBC	ISO 4892-2
UV Aging Test	Pass	ISO 4892 - 2
Density	1.2g/cm <sup>3</sup>	Ceram, Stoke on Trent
24 Hour Water Absorption	2.62%	ASTM D684
Flammability Resistance	Euro Class Bfl-S1	BS EN 13501-1 (TBC)
Fire Resistance	Pass	476 Part 7 Class 3
Expansion Rate	6.51 x 10-5K	Ceram, Stoke on Trent
Weatherability	No Damage at 100 cycles	MOAT 22
Thermal Conductivity	0.154 W/m.K.	Indicative result
Frost Resistance	No Damage	DD CEN/TS 772-22 :2006
Maximum Thermal Expansion Rate*	0.038mm/min/°change	ESG Report M5703R1 Rev1
Maximum Thermal Contraction Rate**	0.036mm/min/°change	ESG Report M5703R1 Rev1
Structural Wind Load-Negative	<654.86kg***	ESG Report M5703R1 Rev1
Structural Wind Load-Positive	<2308.6kg	ESG Report M5703R1 Rev1

\*from 60 to 80°C \*\*from 70 to 30°C \*\*\*Dura Cladding exceeded the test rig capacity \*\*\*\*After UV aging (1000 hours & rain)

## Cladding Trims and Accessories



Starter Trim



Top Window Trim



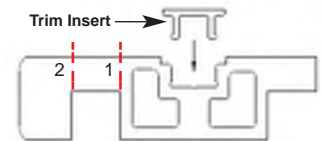
End Caps and Plugs



Trim Insert



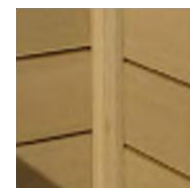
External/Internal/  
Expansion Trim



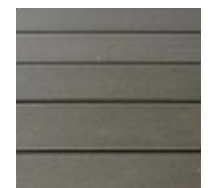
Red lines indicate cut lines  
1 - Cut line 1 for internal corners  
2 - Cut line 2 to make expansion trim

## Cladding Colour Options

Colours shown are representative only, actual colours may vary slightly. Colour samples available on request. For large orders, bespoke colours can be selected.



CEDAR



CHARCOAL

# The Green Deal

UK Finance up to £10,000

The Department of Energy and Climate Change (DECC) aims to revolutionise the energy efficiency of British properties. It plans to help home owners make energy-saving home improvements for no upfront cost. From 2013, home owners may be able to get finance of up to £10,000 to insulate their homes. Dura Cladding is designed to be used in conjunction with external wall insulation for houses with a solid wall non insulated structure.

Recent press also suggests that home owners who insulate their homes, could be offered a reduction in stamp duty or council tax.

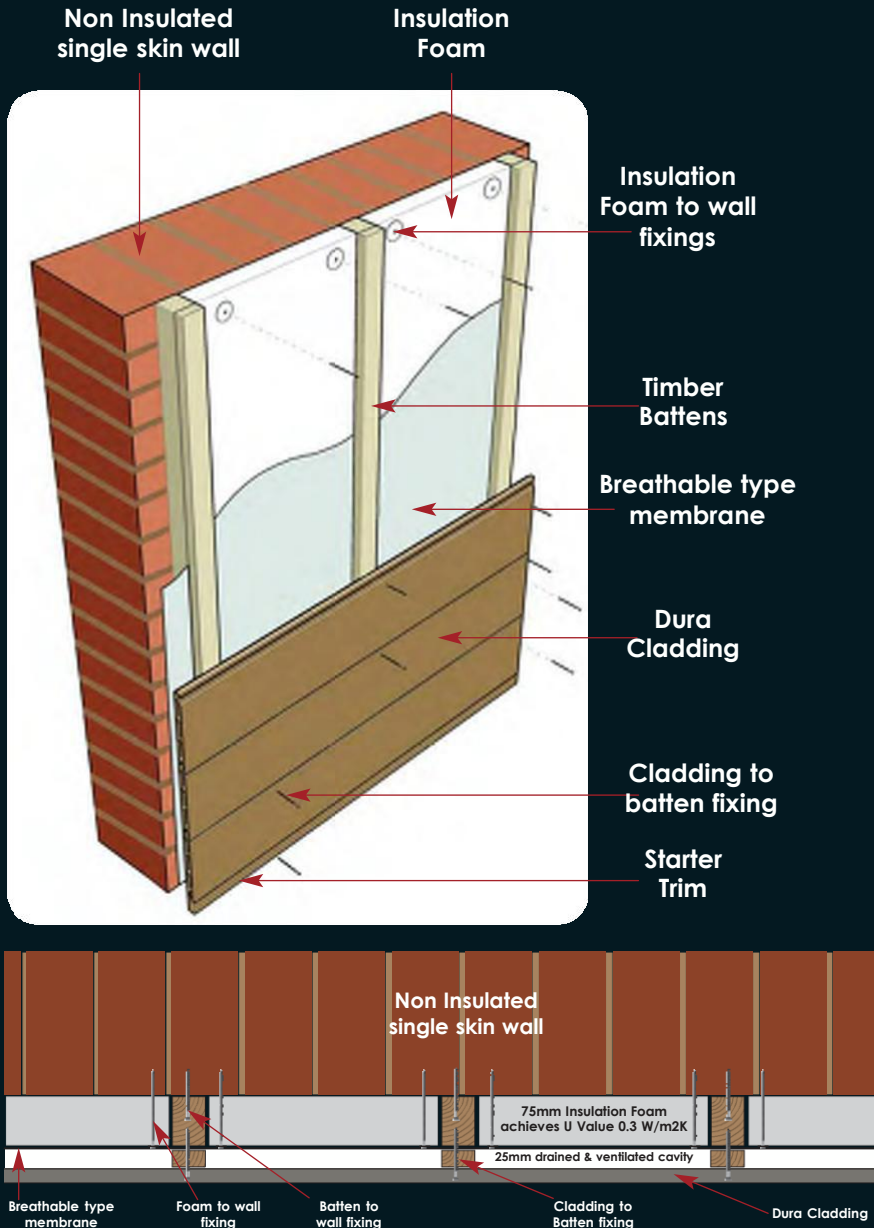
As the UK benefits from the costs savings associated with externally insulated walls, Dura Cladding can provide a cost-effective and easy-to-install solution for transforming the appearance of any building at the same time as achieving energy cost savings.

## Installation system

Dura Cladding is generally installed onto 50mm x 50mm timber battens screwed to the wall and spaced at 400mm centres.

When insulating exterior walls, the battens need to be increased in depth to 100mm.

75mm thickness Celotex FR5000 PIR insulation or similar is then fixed to the wall between the battens, leaving a 25mm air gap at the front. Dura Cladding is then fixed to the timber batten with screws in the usual way. This insulating system benefits houses, barns, outbuildings, offices, factories and commercial buildings, providing vastly improved insulation, as well as transforming the appearance.



## OUR OFFICES:

**UK (Head Office)**  
ACM International Inc.  
Auckland Hill,  
West Norwood, SE27,  
London, UK.

Contact: Andy Lee - GGM  
Office: + 44 75 535 83910  
[Andyaccrue@gmail.com](mailto:Andyaccrue@gmail.com)  
[andy@accruegroup.com](mailto:andy@accruegroup.com)

**USA / Canada**  
ACM [USA]  
9 Pinewood Lane,  
Warren, New Jersey,  
07059, USA.

Contact: John Ross  
Office: + 173274 27179  
[Jr.adriatik@gmail.com](mailto:Jr.adriatik@gmail.com)

**Balkans Region**  
ACM [Albania]  
Tirana Sheraton Hotel  
Shopping Mall, Zyra G2  
Tirana, Albania.

Contact: Petro Vjero  
Int'l: +355 423 79607  
Mobil: 069 5430 934  
Mobil: 069 4094 340  
[Petro.vjero@gmail.com](mailto:Petro.vjero@gmail.com)  
[Jr.adriatik@gmail.com](mailto:Jr.adriatik@gmail.com)

**Israel**  
ACM [Israel]  
2/2 Zeev Sharf St,  
Jerusalem,  
97842. Israel.

Contact: Jacob / Bary  
Int Tel: +972 54 907 7790  
[jacob@ibtech.co.il](mailto:jacob@ibtech.co.il)

Due to our policy of continual improvement we reserve the right to change specifications at all times without prior notice.

**ACCRUE CONSTRUCTION  
MATERIALS INC**

